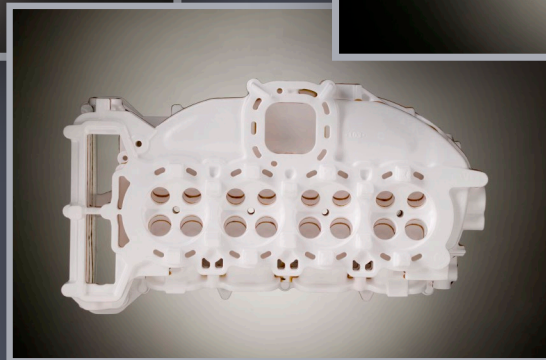
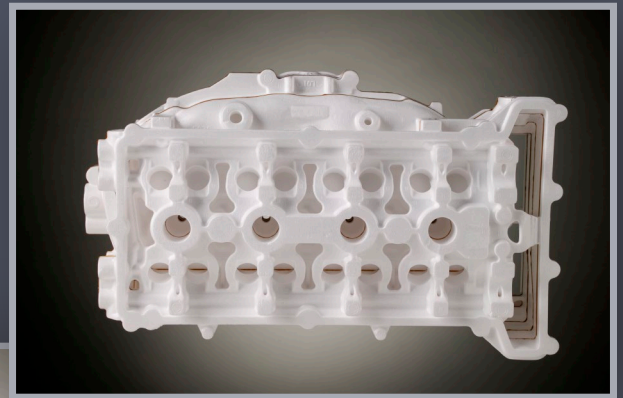
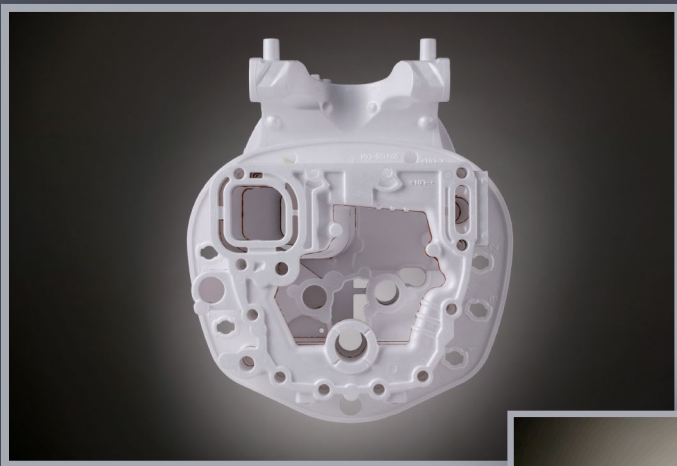


# Lost Foam

FOUNDRY PATTERNS

OEM



**ACH**  
FOAM TECHNOLOGIES

LEADING THE INDUSTRY IN EPS MANUFACTURING ●●●

# Lost Foam

## FOUNDRY PATTERNS

ACH Foam Technologies is a molder of EPS Lost Foam patterns for foundry applications. Lost foam casting offers design flexibility and opportunities to consolidate multiple castings into one component.

We utilize the latest technology in molding and pattern assembly equipment to produce high quality foam patterns. These patterns are the form for casting metal OEM parts such as engine blocks, heads, crankcases and other components.

Our team of technical professionals can facilitate the tooling process from tool design to tool build. We have in-house CMM capabilities for precision measurement and have ISO 9001 registered facilities in Wisconsin & Iowa\*

\*Note: Design activities are not conducted at the ISO 9001 registered facilities, these facilities manufacture products to meet customer specified designs.



### OEM

#### Resource Efficient

EPS manufacturing uses little energy and creates little pollution. Steam is a component of the Expanded Polystyrene (EPS) manufacturing process. The water from this process is collected and re-used many times. Additionally, only 0.1% of total oil consumption is used to manufacture EPS.

#### Recyclable

EPS is recyclable and can be turned into new expanded polystyrene (EPS) products or thermally processed into a resin to make other products such as garden furniture, coat hangers and single use cameras.

#### Environmentally Friendly

EPS has never contained CFC (chlorofluorocarbon), HCFC (hydrochlorofluorocarbon), HFCs (hydrofluorocarbon) or formaldehyde which are harmful to the earth's ozone. EPS is inert and stable and does not produce methane gas or contaminating leachates.



**ACH**  
FOAM TECHNOLOGIES

[WWW.ACHFOAM.COM](http://WWW.ACHFOAM.COM) ●●●

Copyright ©2010 ACH Foam Technologies. All rights reserved. Printed in USA.

Rev: IND08-04/15