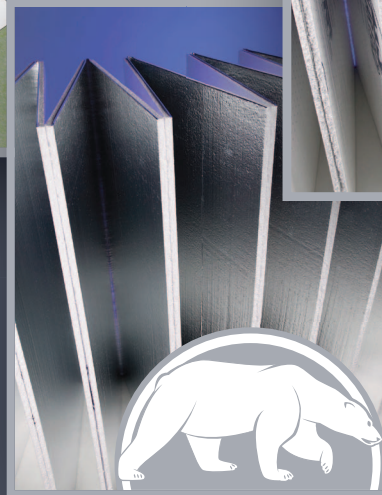
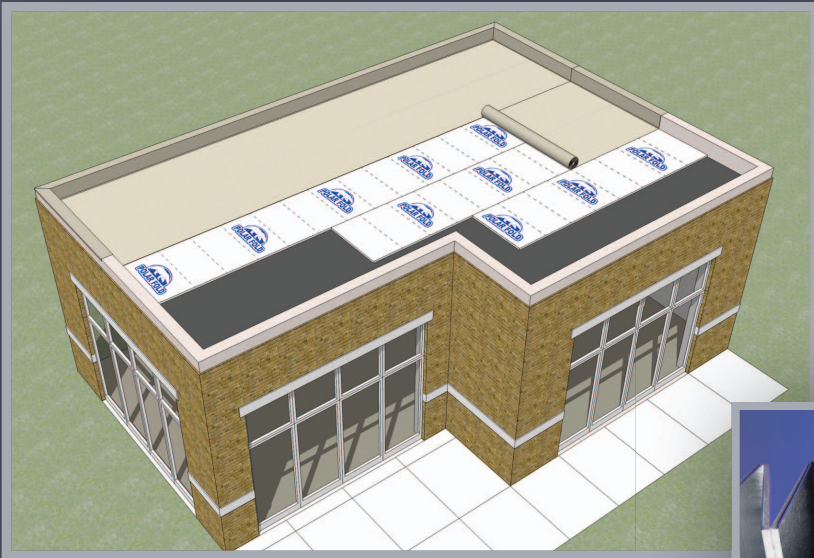


Polar Fold[®]

ROOFING RECOVER BOARD

Insulation



ACH
FOAM TECHNOLOGIES

LEADING THE INDUSTRY IN EPS MANUFACTURING ●●●

Polar Fold®

ROOFING RECOVER BOARD



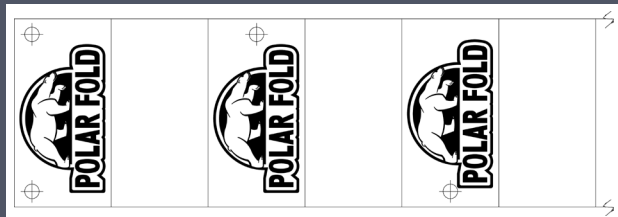
Polar Fold® is a high performance Roofing ReCover Board consisting of light weight, energy efficient, expanded polystyrene (EPS) laminated between strong foil facers. Polar Fold® Roofing ReCover Board is the preferred solution for re-roofing applications among architects and contractors and is compatible with single ply, ballasted, and mechanically attached roof systems.

Polar Fold® offers energy efficiency, water resistance and durability. Polar Fold® is easy to handle and install, saving time and labor. The innovative fan fold design ensures Polar Fold™ lays flat during installation and provides a level surface for roof membranes.

Polar-R® is also available for roof applications and comes in 4' x 8' sheets in 1/2" to 4" thicknesses and is manufactured with the same quality materials as Polar Fold®.

Installation Instructions

- 1** The substrate should be flat, dry and free of any foreign materials that would damage the Polar Fold® insulation board. The beginning of installation indicates that the contractor has accepted the condition of the existing substrate.
- 2** Some membrane manufacturers will require a higher concentration of fasteners. Consult membrane manufacturer for installation instructions.
- 3** One fastener is placed at each corner of the leading and trailing edges of Polar Fold®. One fastener is placed every 12 square feet on alternating sides of the sheet thereafter. (See Illustration).
- 4** When used with dark colored membranes, Polar Fold® is available with foil facers and should be installed with the silver or foil side up.



Physical Properties*

| Property | 3/8" | Type I | Type VIII | Type II | Type IX |
|----------------------|---------------|--------|-----------|---------|---------|
| R-Value | 40° mean temp | 1.56 | 1.59 | 1.71 | 1.78 |
| Compressive Strength | psi | 10.0 | 13.0 | 15.0 | 25.0 |
| Water Absorption | volume % | <1.0 | <1.0 | <1.0 | <1.0 |

Caution: EPS contains a flame retardant; however, it should be considered combustible and not exposed to sources of ignition.

*See manufacturers recommendations or tech data brochure for more information.

| Property | 1/2" | Type I | Type VIII | Type II | Type IX |
|----------------------|---------------|--------|-----------|---------|---------|
| R-Value | 40° mean temp | 2.09 | 2.13 | 2.28 | 2.38 |
| Compressive Strength | psi | 10.0 | 13.0 | 15.0 | 25.0 |
| Water Absorption | volume % | <1.0 | <1.0 | <1.0 | <1.0 |

EPS cores are manufactured to meet the requirements of ASTM C-578 and is listed under ICC 1006. Polar is listed under ICC ESR-1504. Consult ACH Foam Technologies for current code compliance. Other sizes and densities are available to suit project requirements.

Labor Savings & User Friendly

Polar Fold® is available in 4' x 50' fan fold sheets that arrive in compact, light weight bundles, making it easy to handle and install. The 50' length of Polar Fold® reduces installation time. Polar Fold® is designed to lay flat during installation, eliminating seam welding problems experienced with other fan fold insulations.

Durable & Water Resistant

Polar Fold's high performance EPS is wrapped in tough film, making it durable and water resistant. Polar Fold® has a low water absorption and rate of permeability which makes it a superior product for re-roof applications. The film facers allow single ply membranes, including PVC, to be installed directly over Polar Fold® without additional slip sheets.

Cost Effective Precision Performance

Polar Fold® is less expensive than other re-cover products and provides more R-Value for less money. High performance EPS insulation also has a consistent long-term R-Value that does not experience thermal drift. EPS has a 35 year history of proven performance in the roofing industry.

Environmentally Friendly

Polar Fold® improves the thermal performance of recover applications. Contains no ozone depleting agents, is made with recycled materials and is used as a component in LEED certified projects. Polar Fold® is available with a 20 year R-value warranty.



ACH
FOAM TECHNOLOGIES

WWW.ACHFOAM.COM

Copyright ©2010 ACH Foam Technologies. All rights reserved. Printed in USA. Polar-R and Polar Fold are registered trademarks of ACH Foam Technologies, Denver, CO.

Rev: ARC05-01/10