



Foam-Control EPS

NAILBASE

WALL APPLICATIONS CONSTRUCTION MANUAL

CONTROL,
NOT COMPROMISE.®

Note: Information deemed reliable at time of printing.
Please visit www.foam-control.com for the latest information.



EPS

NAILBASE WALL APPLICATIONS CONSTRUCTION MANUAL

When you choose Foam-Control EPS Nailbase, you're collaborating with a team of experts who work with you every step of the way. We're here to answer your questions, solve your problems, and do everything we can to make sure your project proceeds smoothly—and ends successfully.

Foam-Control EPS products are manufactured by a network of licensed manufacturers throughout North America and the world. Foam-Control EPS Nailbase, licensed facilities adhere to strict, consistent standards to ensure high-quality.

This network allows us to offer architects, designers and builders the best of both worlds: the resources of the country's largest provider of Nailbase products and systems, and the superior attention and customer service of a local supplier.

Note: Information deemed reliable at time of printing. Please visit www.foam-control.com for the latest information. January 2011.

Table of Contents

Foam-Control Nailbase

Details

| | |
|---|---------|
| Foam-Control Nailbase | FC-200 |
| General Notes | FC-200a |
| 16 in. o.c. Frame Wall Installation | FC-201 |
| 24 in. o.c. Frame Wall Installation | FC-201a |
| Concrete Wall Installation | FC-201b |
| Exterior Top of Wall | FC-202 |
| Exterior Top of Wall | FC-202a |
| Exterior Bottom of Wall | FC-203 |
| Exterior Bottom of Wall | FC-203a |
| Exterior Opening Header | FC-204 |
| Exterior Opening Sill | FC-205 |
| Exterior Opening Jamb | FC-206 |
| Exterior Outside Corner | FC-207 |
| Exterior Outside Corner | FC-207a |
| Exterior Inside Corner | FC-208 |
| Exterior Inside Corner | FC-208a |

Technical Bulletins

| | |
|---|-------------------|
| Foam-Control Nailbase - Fastening to Concrete or Fully-Grouted Concrete Masonry Walls | Nailbase No. 4004 |
|---|-------------------|

General Recommendations

Foam-Control Nailbase Sizes

Foam-Control Nailbase is made in a variety of sizes, most commonly 4' x 8'. Consult the local Foam-Control Nailbase Manufacturer for sizes, thicknesses, and fabrication services available in your area.

Environmentally Safe

The core material for Foam-Control Nailbase, Foam-Control EPS, contains no CFCs, HCFCs, HFCs or formaldehyde and is recyclable. Foam-Control EPS is inert, non-nutritive and highly stable. Your Foam-Control Nailbase Manufacturer encourages you to support recycling and energy conservation.

Warranty

Foam-Control Nailbase Manufacturers provide a 20-year warranty covering thermal performance. Contact the local Foam-Control Nailbase manufacturer for details regarding the warranty program.

Handling - Storage - Protection

Foam-Control Nailbase should be stored in a fully supported manner and protected from weather. Cover stored Foam-Control Nailbase with tarps or similar protective wraps. Exposure 1 OSB facings are used in Foam-Control Nailbase manufacture; however, exterior wall installations must be covered by a code recognized weather resistive barrier applied at the time of installation. Apply wall cladding when immediately practical.

EPS contains a flame retardant additive. However, the EPS should be considered combustible and used with code approved thermal barriers and should not be stored near any open flame or source of ignition. Do not install or use EPS with coal-tar pitch or highly solvent extended mastics, adhesives or sealants. Consult the local Foam-Control Nailbase Manufacturer for suggested adhesives, sealants, and assembly specifications not otherwise detailed in this manual.

General Recommendations - cont'd

Do-All-Ply and Splines

Foam-Control Nailbase may be joined as needed using splines. These attachments are made with nails, staples, or screws and Do-All-Ply.

Spline Connection and Do-All-Ply use shall be as specified by the design professional based upon structure design, climate zone, and moisture vapor analysis.

Vapor Retarders

Foam-Control Nailbase may require the use of a vapor retarder. Consult with a local design professional for a recommendation.

Special Treatments

Foam-Control Nailbase can be produced with Foam-Control EPS with Perform Guard that protects the core insulation from potential termite damage. In addition, the OSB material can be coated with FrameGuard that protects the OSB from mold, mildew and termite damage. Please contact your local Foam-Control Nailbase manufacturer to learn about specifications for these special treatments.

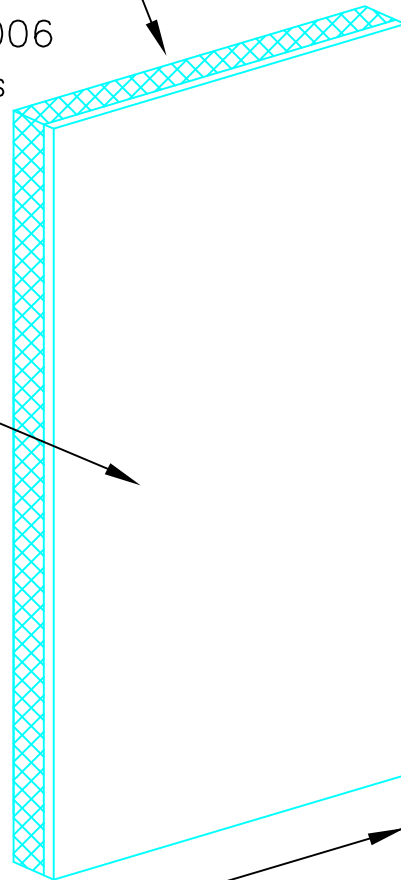


Disclaimer

Details, illustrations, pictures and guidelines provided herein give basic information and illustrate examples of Foam-Control Nailbase installation. The basic information provide herein is not intended to cover every potential use and application of Foam-Control Nailbase. It is the responsibility of the installer to become familiar with his specific application and determine if Foam-Control Nailbase is suitable. By commencing work, the installer accepts full responsibility for the proper and safe installation of Foam-Control Nailbase at his job site. Furthermore, it is the sole responsibility of the installer to meet all federal and local regulatory requirements for job site safety for himself, his workers and any others on the job site while in the execution of all phases of Foam-Control Nailbase installation.

Foam-Control EPS
ASTM C578 Type I
ICC-ES ESR-1006
Thickness Varies

Oriented Strand Board
(OSB) DOC-PS2
EXPOSURE 1
7/16" Typical



8', 9', 10'
Length Typical

4' Width Typical

SECTION

SCALE: NTS

Updated 1-6-11

Foam-Control[®] Nailbase

TITLE:
Foam-Control Nailbase

NO.
FC-200

General Notes

1. Provide adequate support for Foam-Control Nailbase during storage.
2. Store Foam-Control Nailbase flat and protected from weather.
3. Foam-Control Nailbase must be covered with code recognized weather resistive barrier at time of installation.
4. Apply wall covering to Foam-Control Nailbase following wall covering manufacturer recommendations.
5. Fasten trim to Foam-Control Nailbase or wood blocking as required.
6. Attachment of Foam-Control Nailbase shall be with screws into structural members/substrate.
7. Each project shall be engineered as required.
8. Details provided are illustrative examples of Foam-Control Nailbase installation and not intended to cover every potential use and application.

SECTION

SCALE: NTS

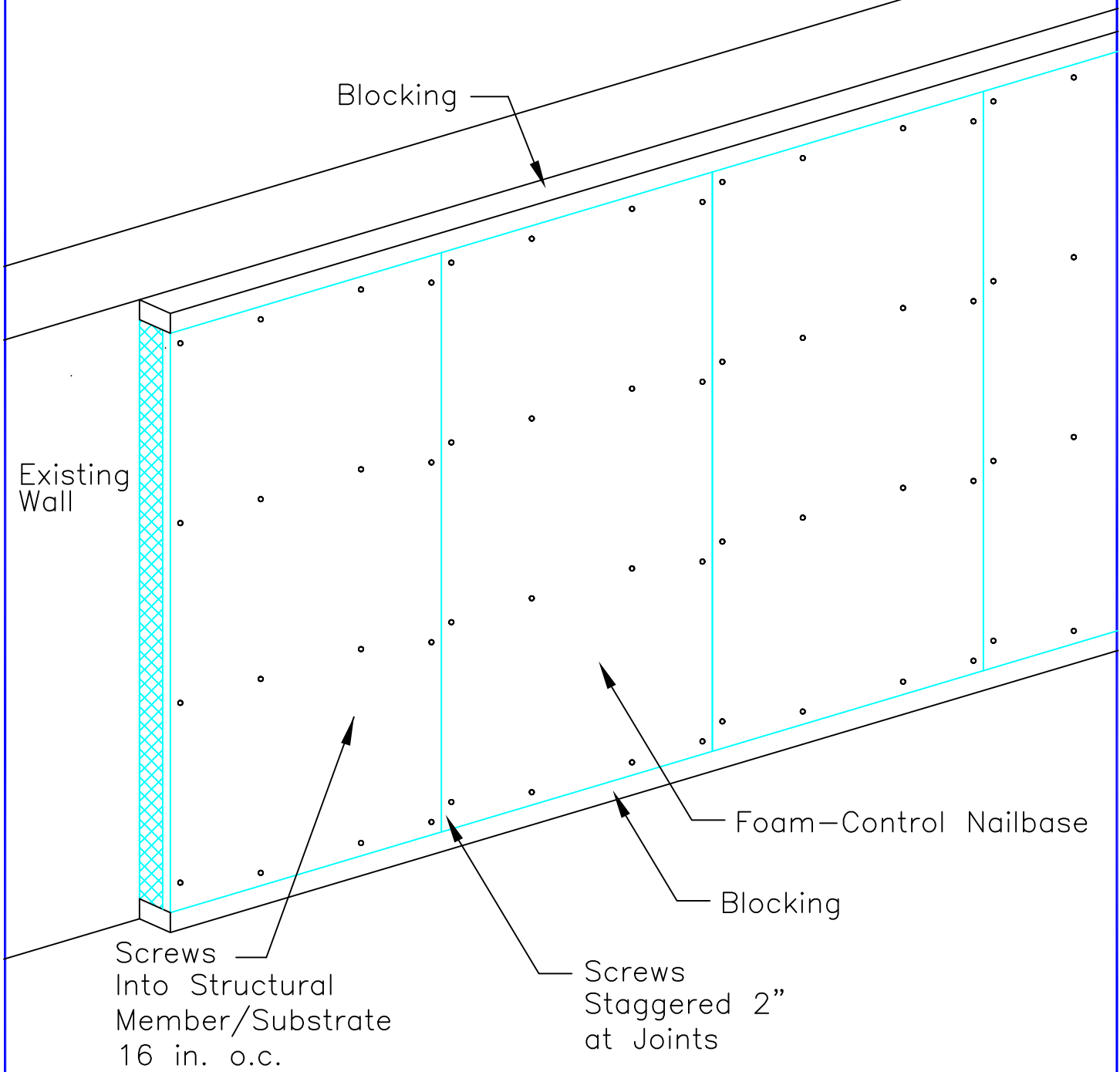
Updated 1-6-11

Foam-Control® Nailbase

TITLE:
GENERAL NOTES

NO.
FC-200a

Note: Screw Pattern Illustrated Is Representative. Each Project Shall Be Engineered As Required.



SECTION

SCALE: NTS

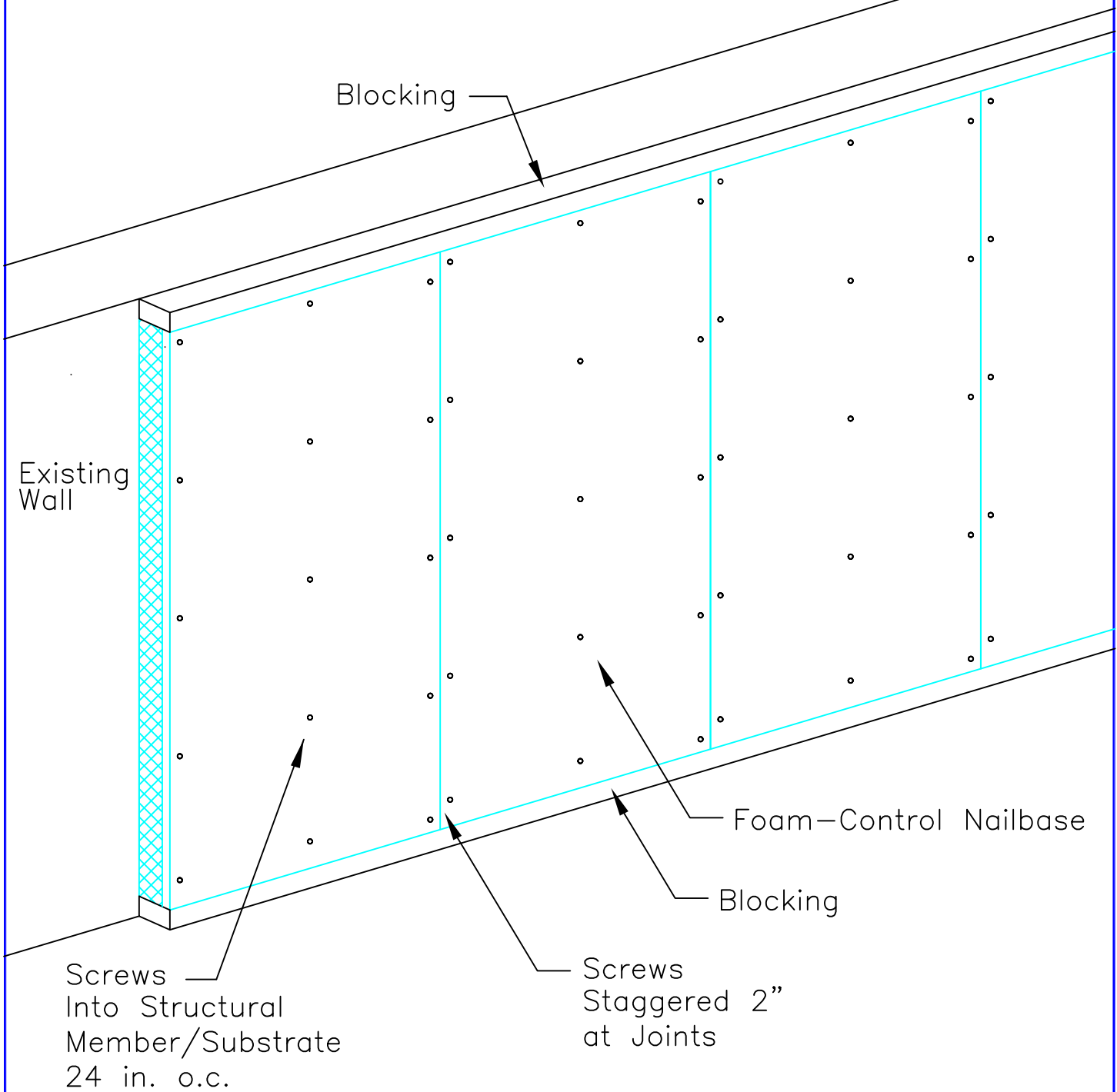
Updated 1-6-11

Foam-Control® Nailbase

TITLE: 16 in. o.c.
FRAMED WALL INSTALLATION

NO.
FC-201

Note: Screw Pattern Illustrated Is Representative. Each Project Shall Be Engineered As Required.



SECTION

SCALE: NTS

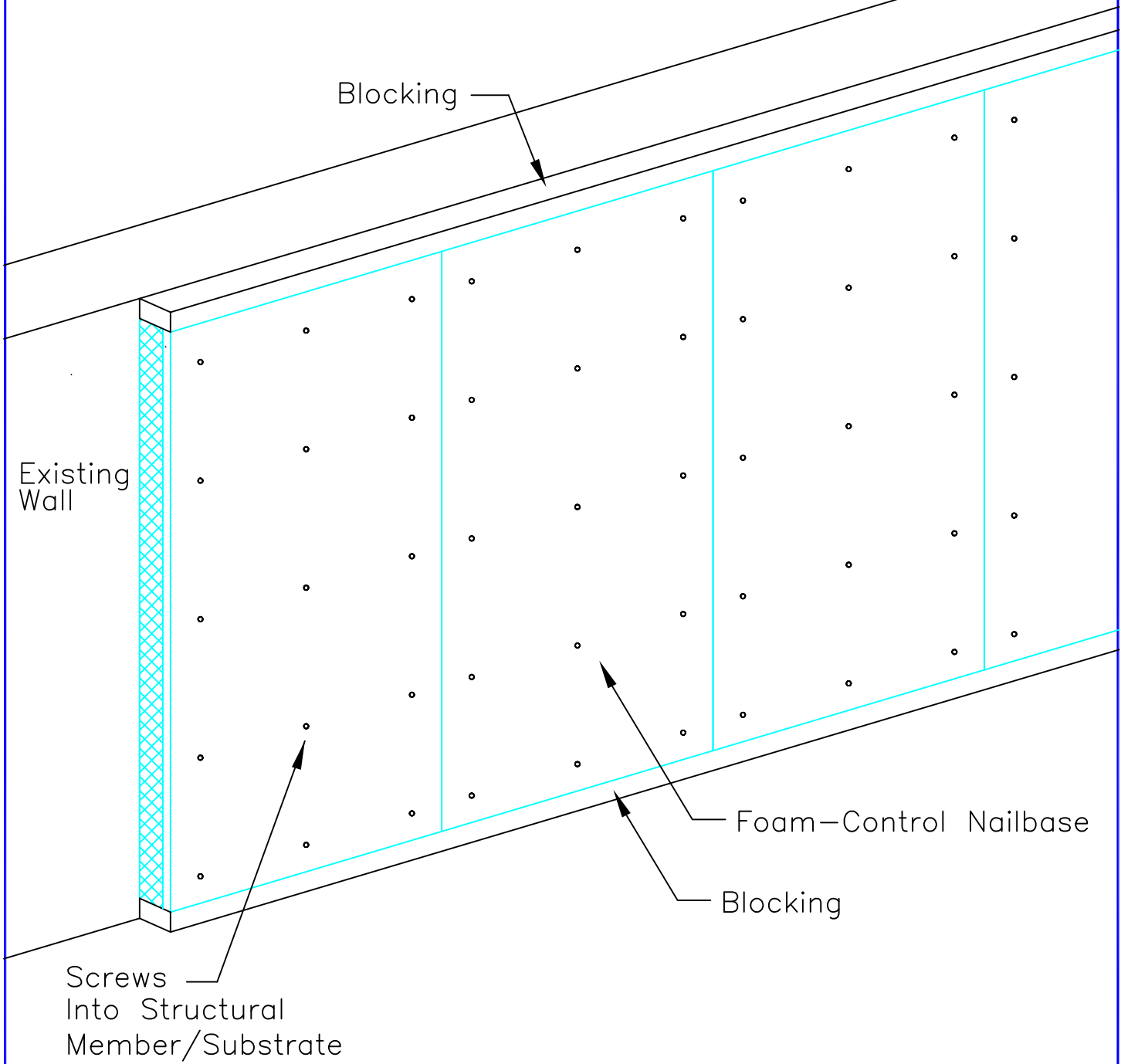
Updated 1-6-11

Foam-Control® Nailbase

TITLE: 24 in. o.c.
FRAMED WALL INSTALLATION

NO.
FC-201a

Note: Screw Pattern Illustrated Is Representative. Each Project Shall Be Engineered As Required.



SECTION

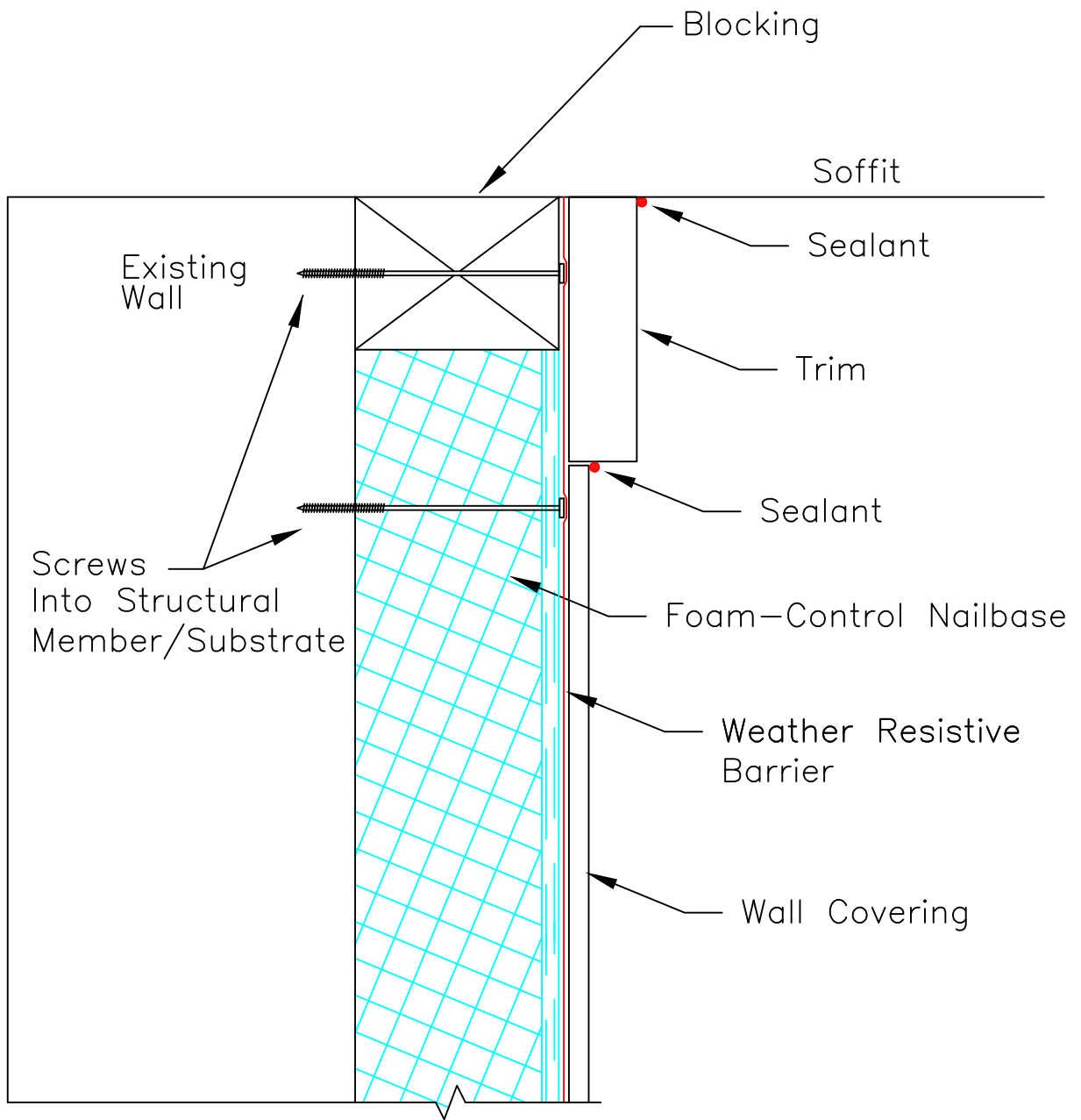
SCALE: NTS

Updated 1-6-11

Foam-Control® Nailbase

TITLE:
CONCRETE WALL INSTALLATION

NO.
FC-201b



SECTION

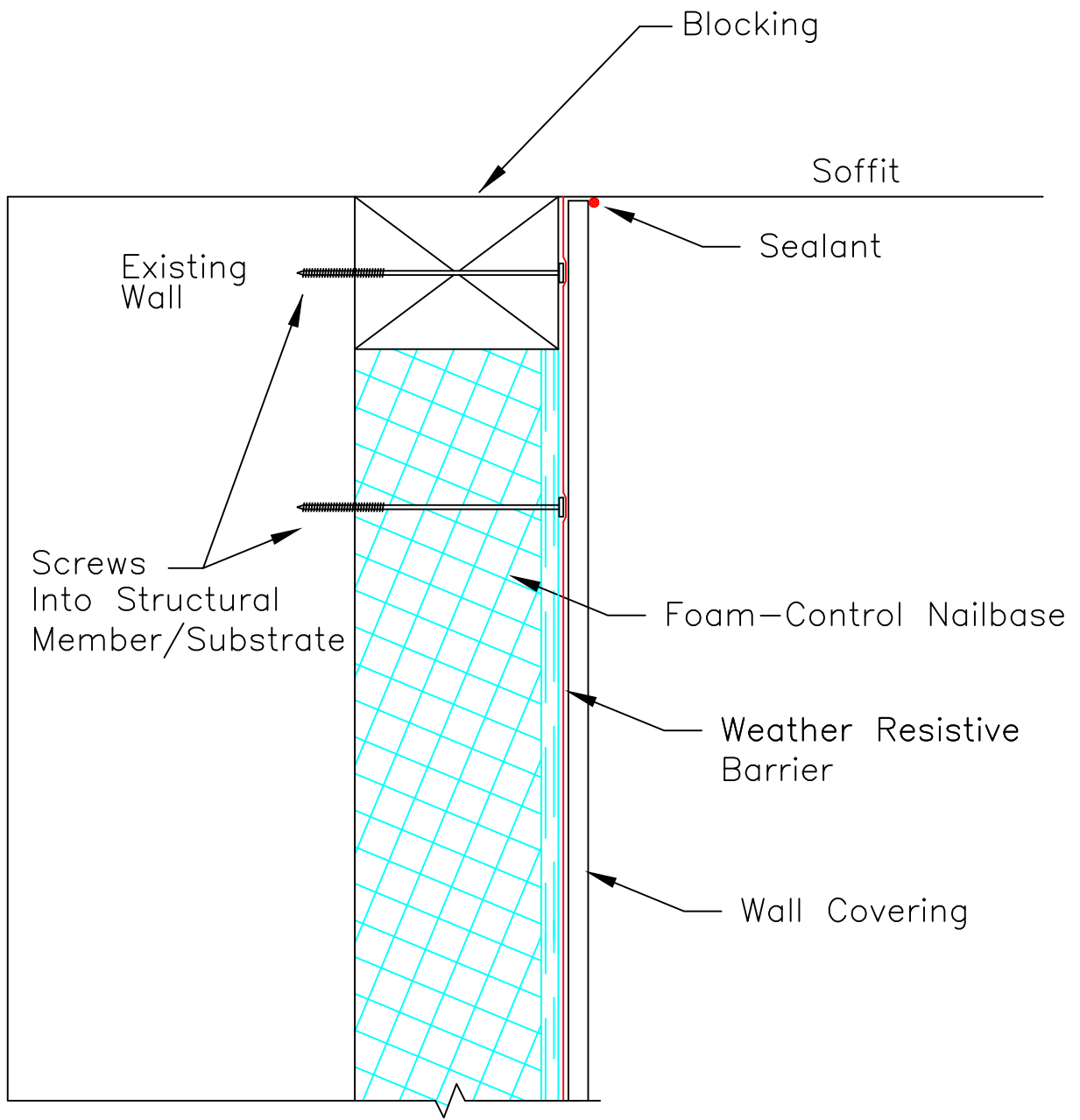
SCALE: NTS

Updated 1-6-11

Foam-Control® Nailbase

TITLE:
EXTERIOR TOP OF WALL

NO.
FC-202



SECTION

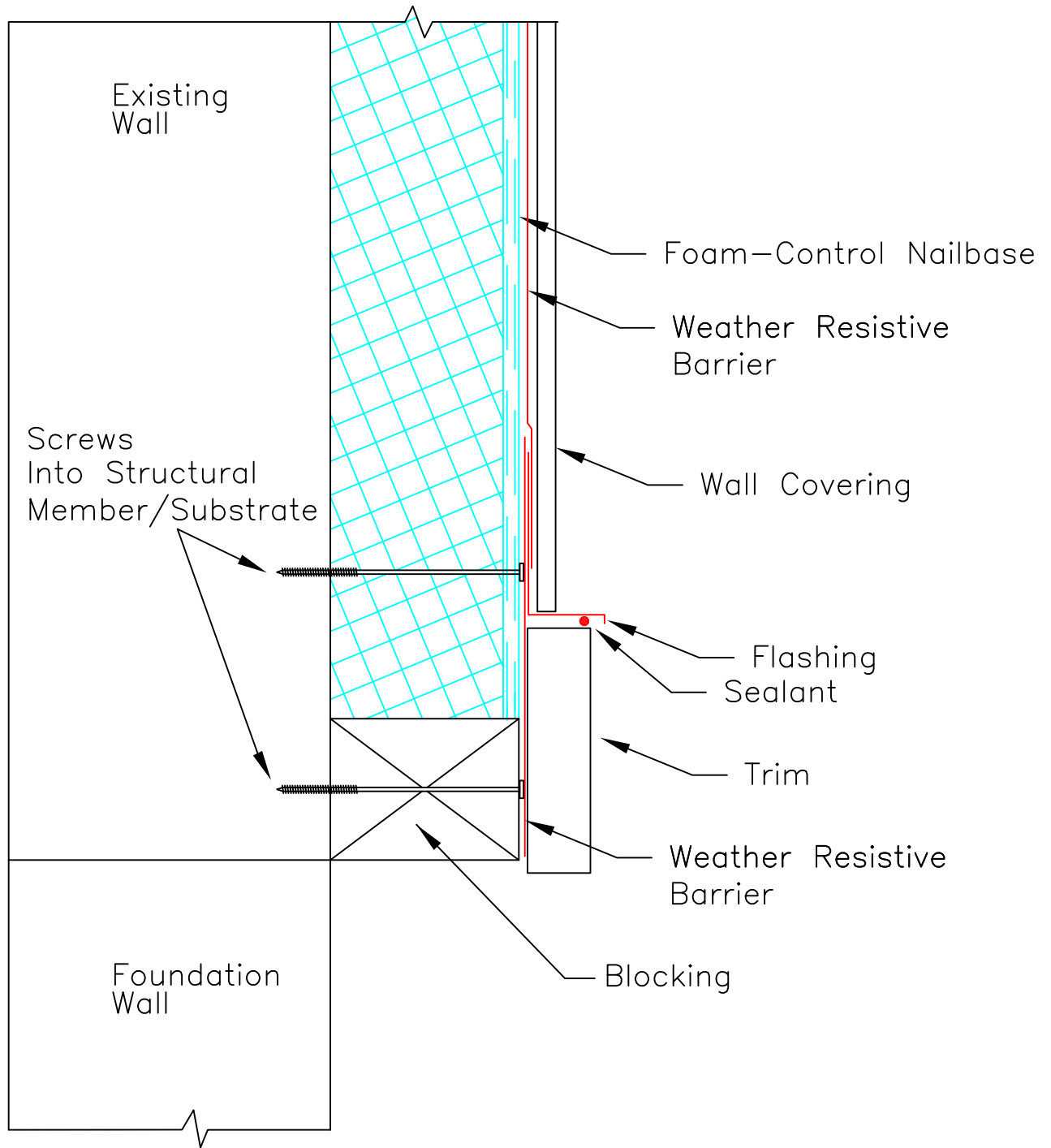
SCALE: NTS

Updated 1-6-11

Foam-Control® Nailbase

TITLE:
EXTERIOR TOP OF WALL

NO.
FC-202a



SECTION

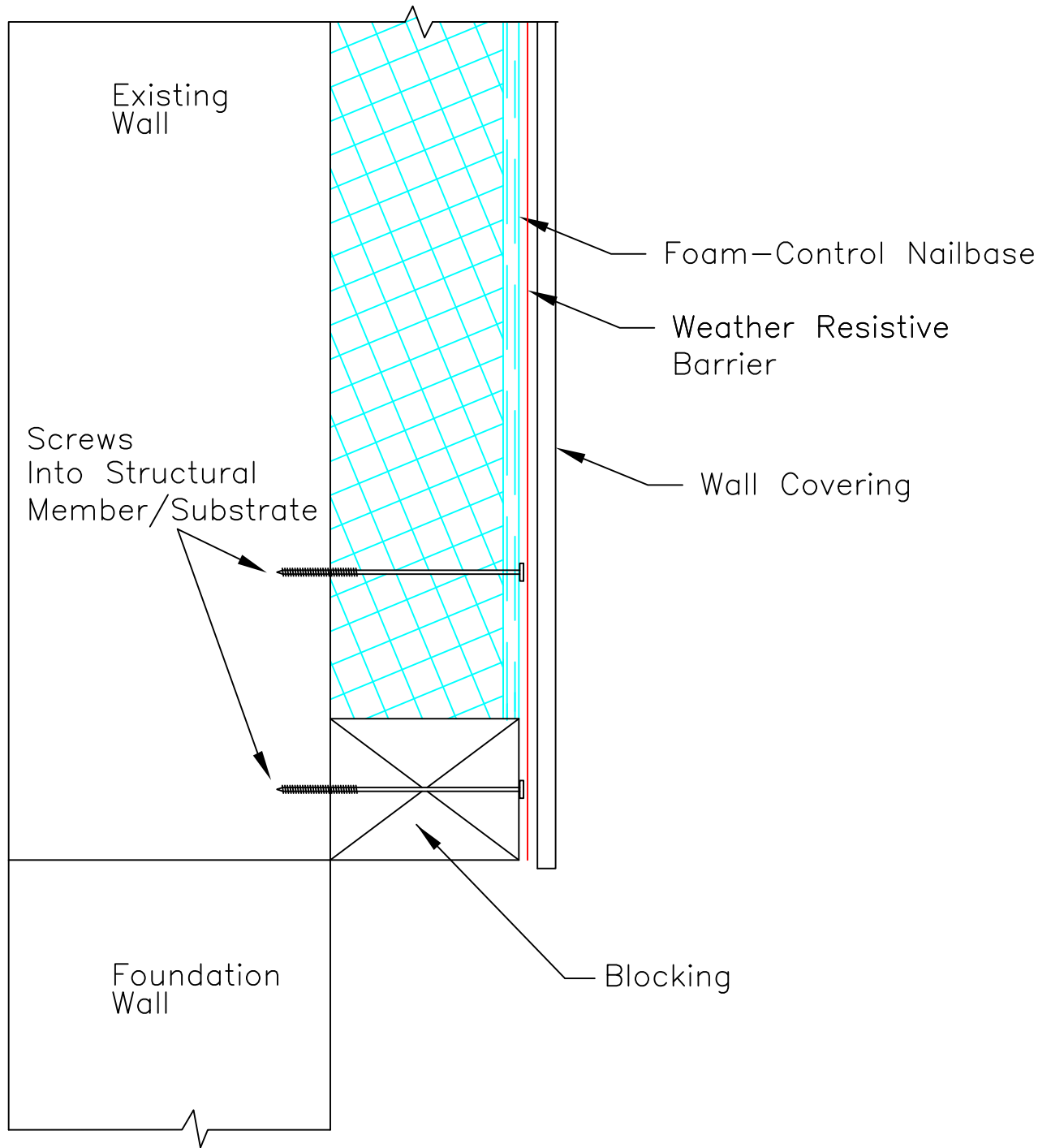
SCALE: NTS

Updated 1-6-11

Foam-Control® Nailbase

TITLE:
EXTERIOR BOTTOM OF WALL

NO.
FC-203



SECTION

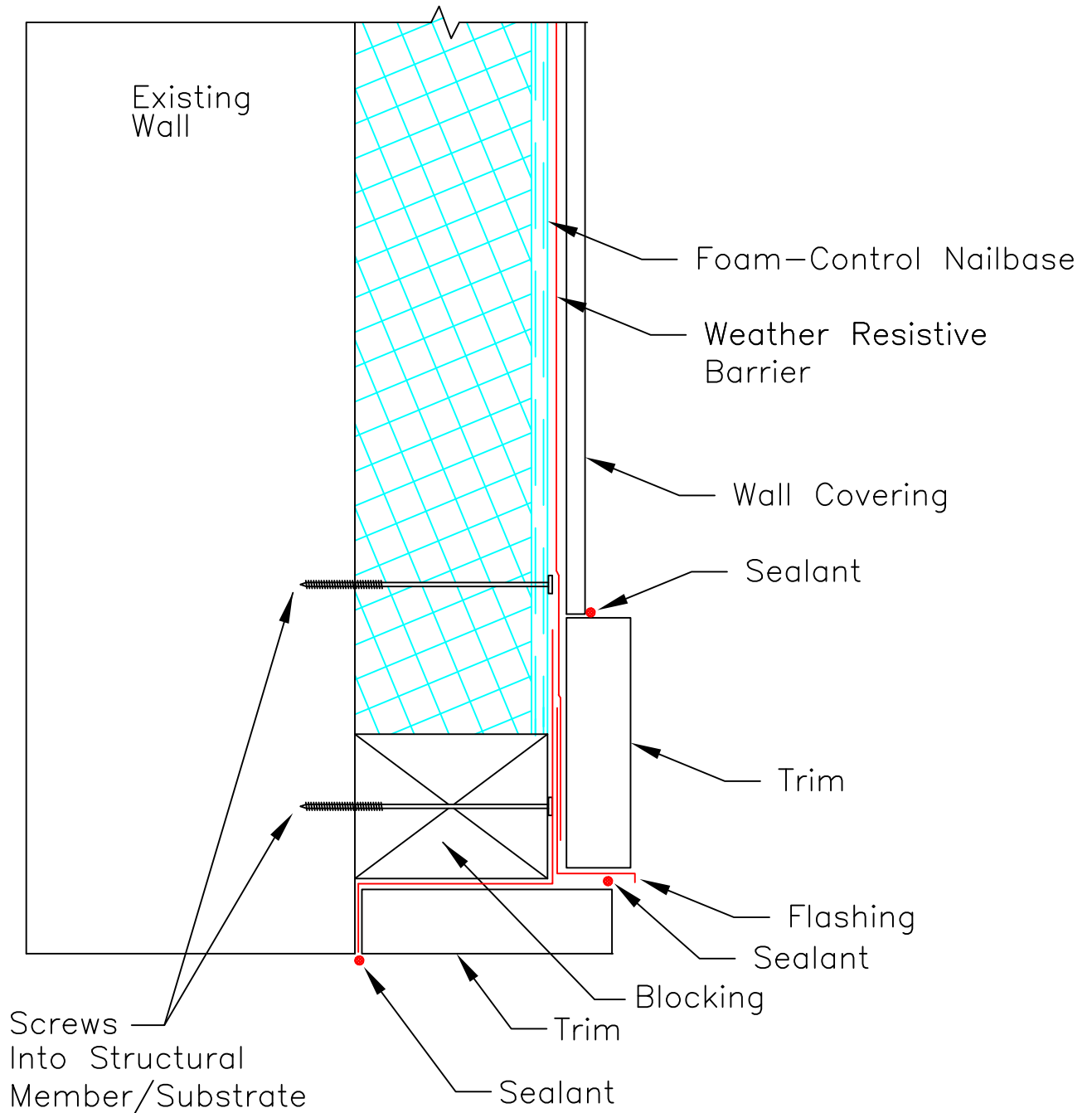
SCALE: NTS

Updated 1-6-11

Foam-Control® Nailbase

TITLE:
EXTERIOR BOTTOM OF WALL

NO.
FC-203a



SECTION

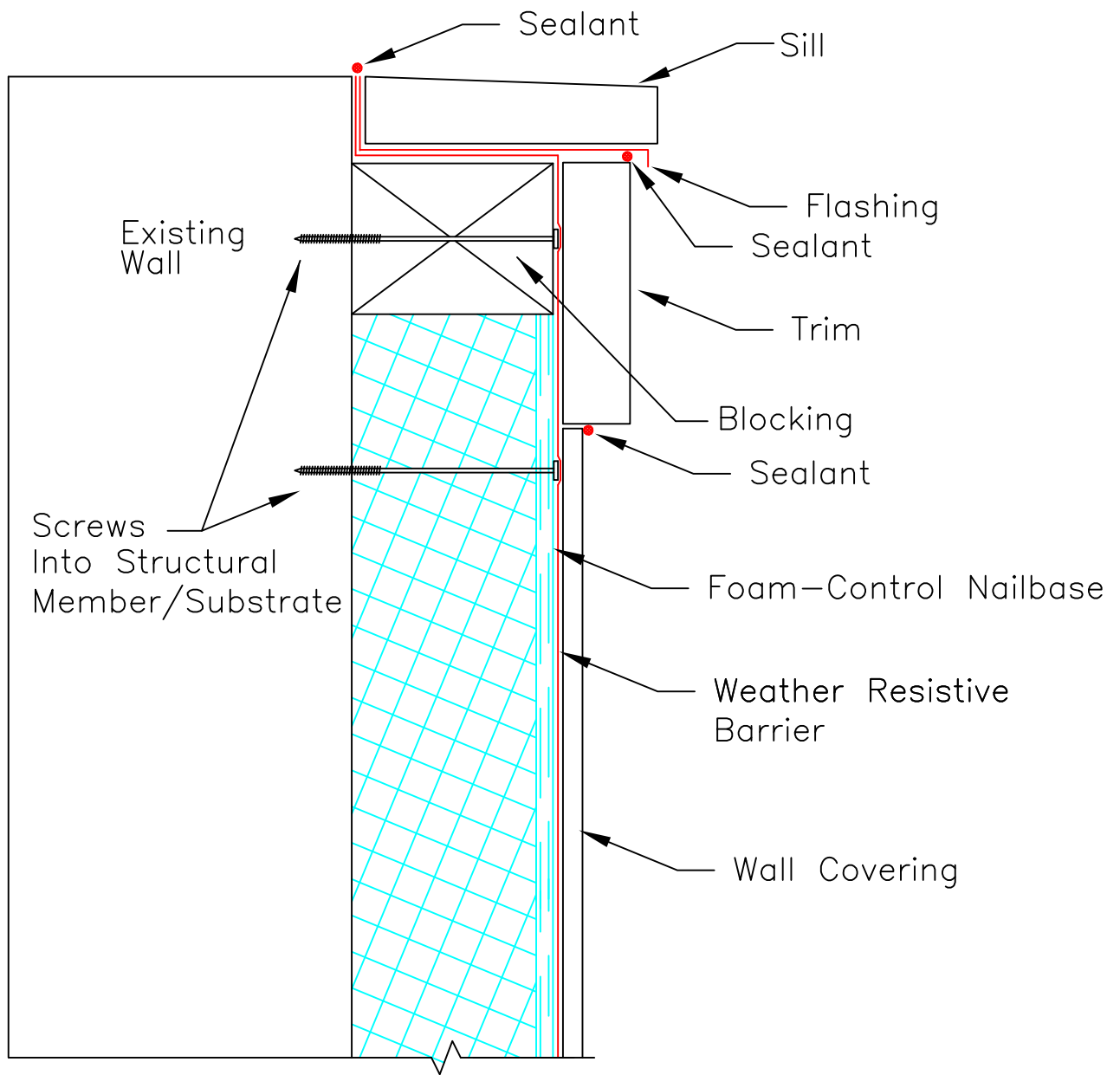
SCALE: NTS

Updated 1-6-11

Foam-Control® Nailbase

TITLE:
EXTERIOR OPENING HEADER

NO.
FC-204



SECTION

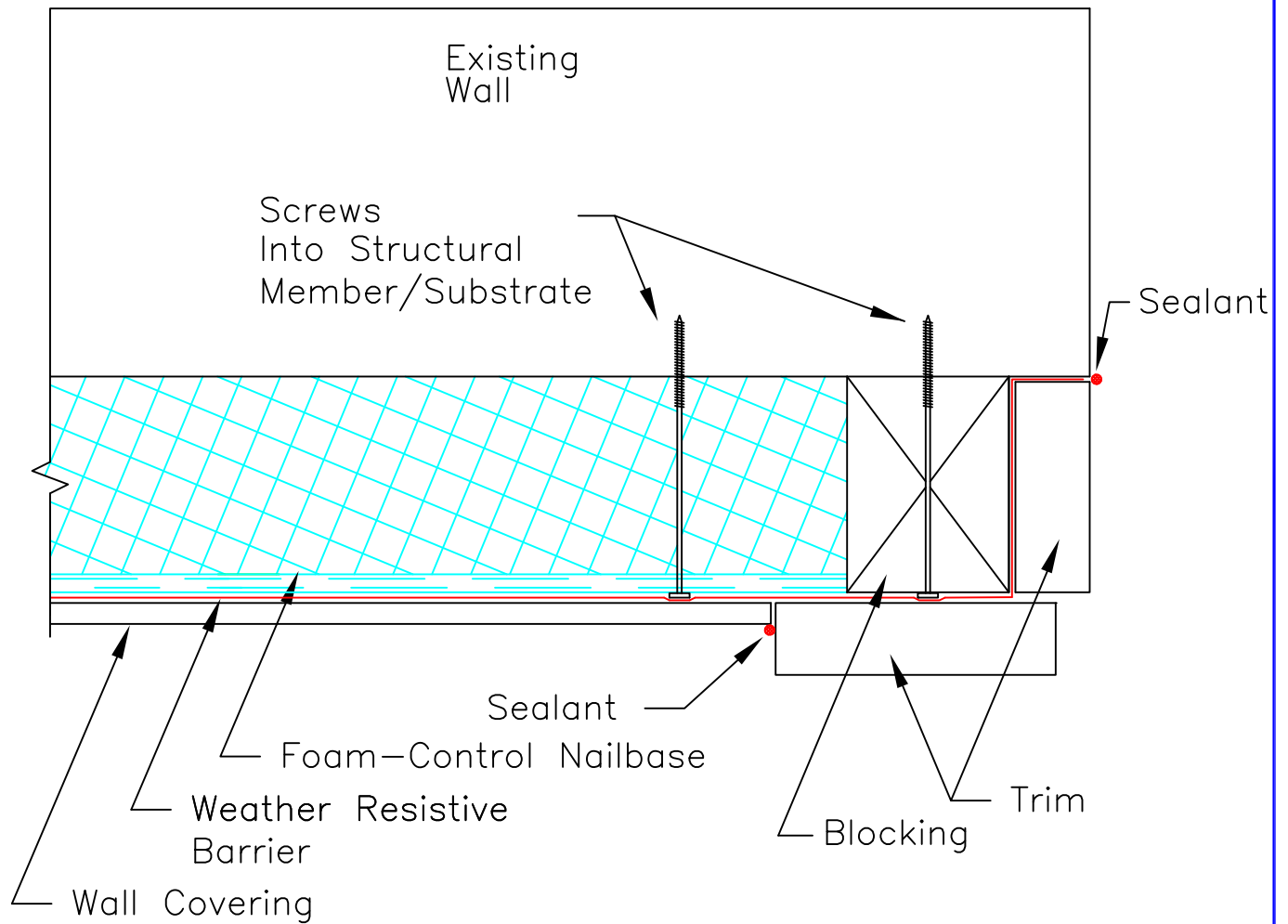
SCALE: NTS

Updated 1-6-11

Foam-Control® Nailbase

TITLE:
EXTERIOR OPENING SILL

NO.
FC-205



SECTION

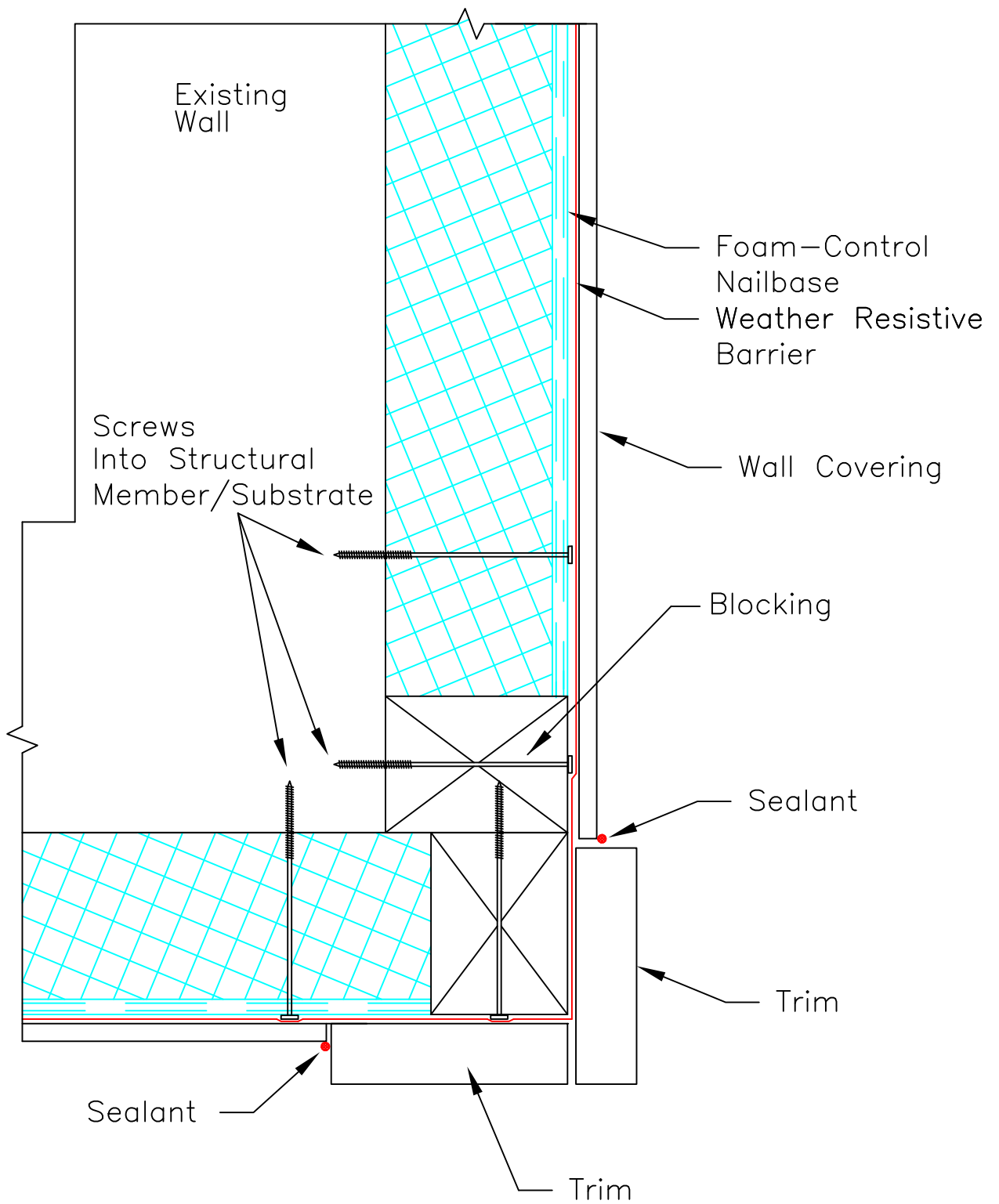
SCALE: NTS

Updated 1-6-11

Foam-Control® Nailbase

TITLE:
EXTERIOR OPENING JAMB

NO.
FC-206



SECTION

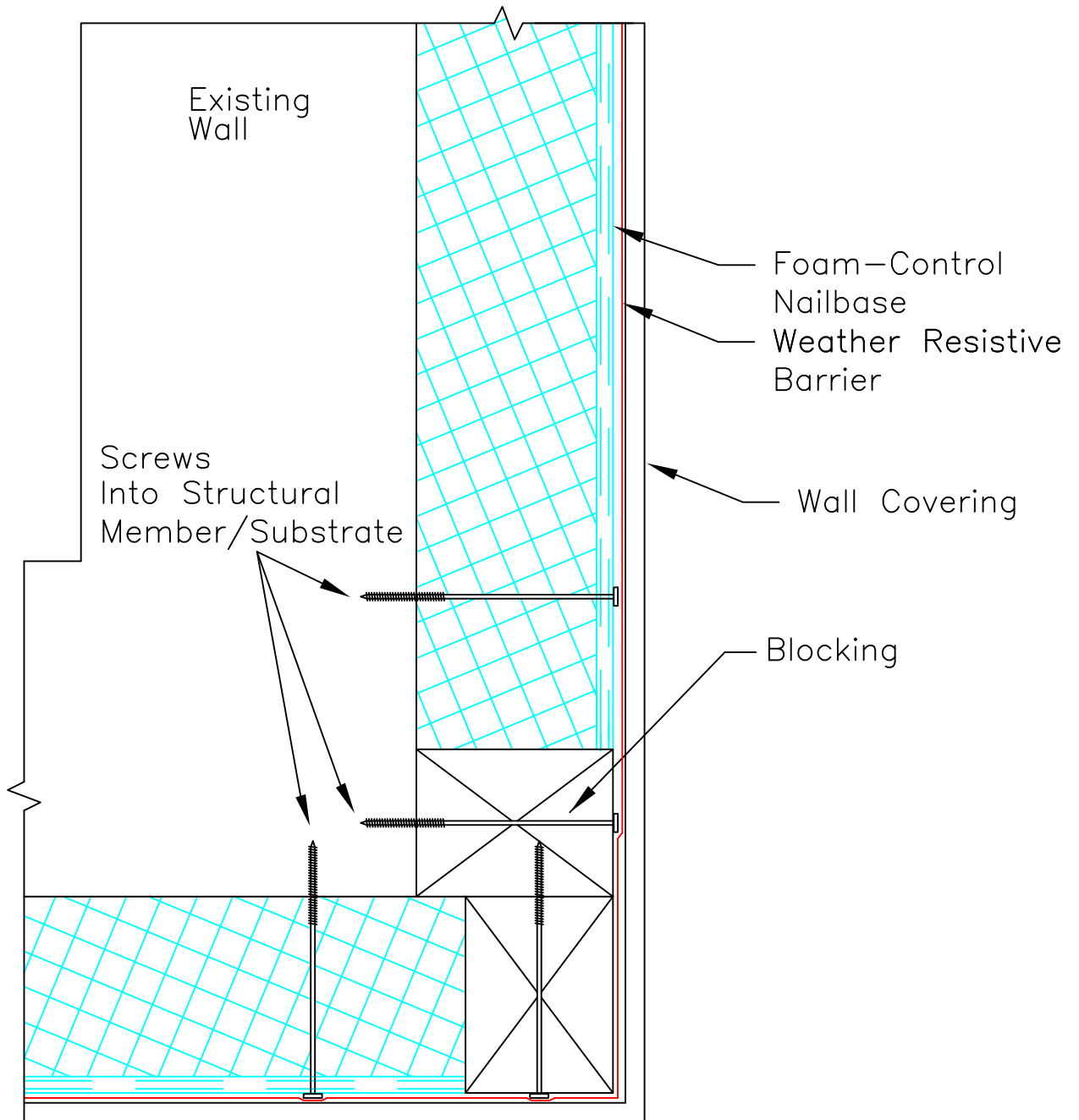
SCALE: NTS

Updated 1-6-11

Foam-Control® Nailbase

TITLE:
EXTERIOR OUTSIDE CORNER

NO.
FC-207



SECTION

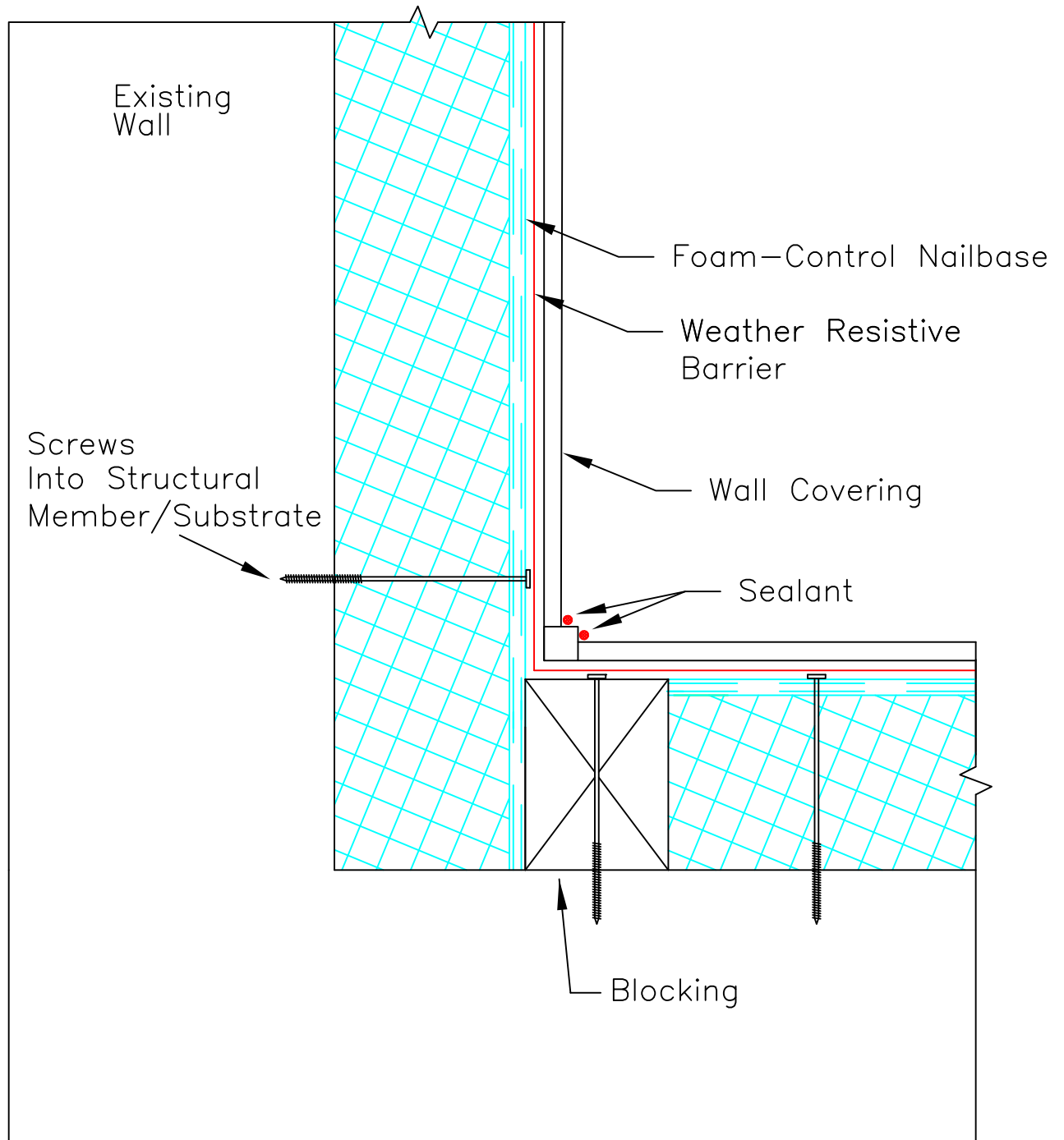
SCALE: NTS

Updated 1-6-11

Foam-Control® Nailbase

TITLE:
EXTERIOR OUTSIDE CORNER

NO.
FC-207a



SECTION

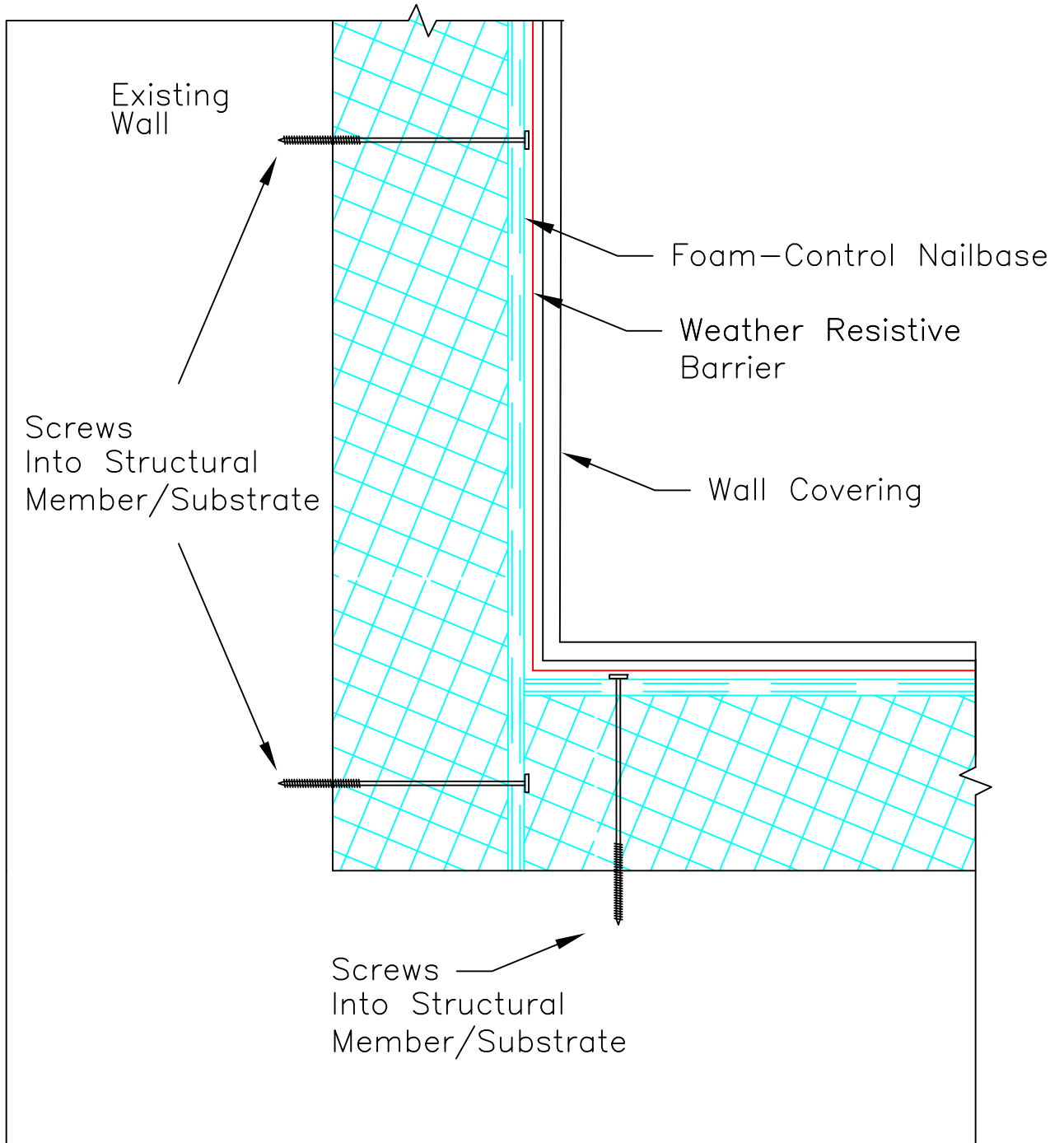
SCALE: NTS

Updated 1-6-11

Foam-Control® Nailbase

TITLE:
EXTERIOR INSIDE CORNER

NO.
FC-208



SECTION

SCALE: NTS

Updated 1-6-11

Foam-Control® Nailbase

TITLE:
EXTERIOR INSIDE CORNER

NO.
FC-208a



Nailbase No. 4004

Subject: Foam-Control Nailbase - Fastening to Concrete or Fully-Grouted Concrete Masonry Walls

Date: April 2010

Minimum fastening requirements for Foam-Control Nailbase attached to concrete or fully-grouted concrete masonry walls with 1/2" (12.7mm) diameter Titen HD® screws have been developed in cooperation with Simpson Strong-Tie Anchor Systems. Various numbers of fasteners per 4' x 8' Foam-Control Nailbase panel provide for a range of allowable loads that Foam-Control Nailbase could support when installed flush over a concrete or fully-grouted concrete masonry wall. Examples of uniformly distributed loads that Foam-Control Nailbase could support include gypsum board or other interior finish materials. Non uniform loads from cabinets, interior fixtures, or plant equipment are not covered in the table and shall be supported using additional fasteners attached to the concrete or fully-grouted concrete masonry wall.

Foam-Control Nailbase Walls - Uniformly Distributed Loading attached with 1/2" (12.7mm) diameter Titen HD® Screws into Concrete or Fully-Grouted Concrete Masonry¹⁻⁷

| Number of Fasteners ⁶ | Allowable Load, psf (kPa) |
|----------------------------------|---------------------------|
| 8 | 13 (0.62) |
| 12 | 34 (1.63) |
| 16 | 52 (2.49) |
| 24 | 52 (2.49) |

1. Applicable to 4' x 8' Foam-Control Nailbase up to 5" thick.
2. The minimum anchor embedment is 2-3/4".
3. The minimum wall thickness is 8" for fully-grouted concrete masonry and 5" for concrete.
4. For installations in fully-grouted concrete masonry, the minimum distance from the anchor to any vertical mortar joint is 1.5" and the minimum distance to any edge on the face of the wall is 6". For installations in concrete, the minimum distance to any edge of the face of the wall is 6".
5. Values do not consider the application of positive or negative pressures (such as wind).
6. Please refer to page 2 of this bulletin for fastening patterns.
7. Building Codes may require special inspection of anchors installed in concrete or masonry. For compliance with these requirements, it is necessary to contact the local and/or regional authority having jurisdiction.

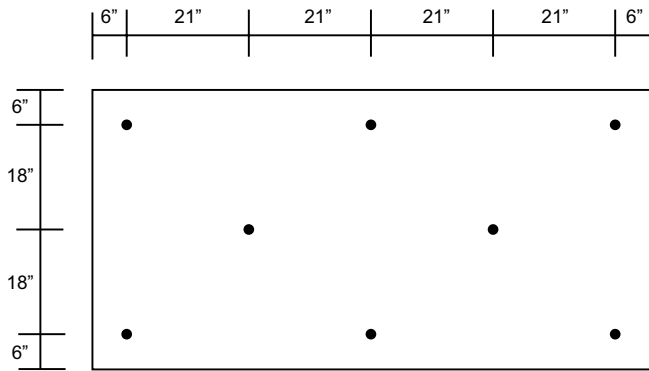
Titen HD® is a registered trademark of Simpson Strong-Tie Anchor Systems.



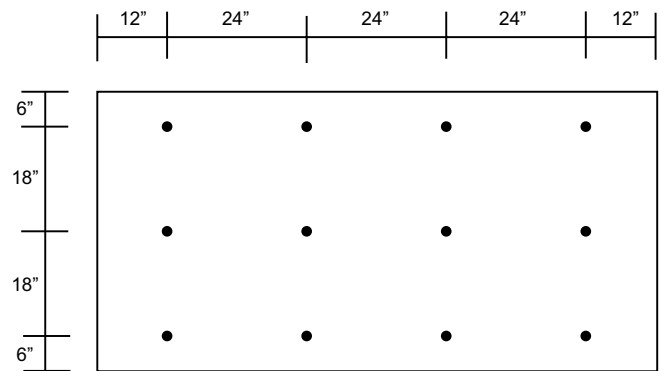
Nailbase no. 4004

Page 1 of 2

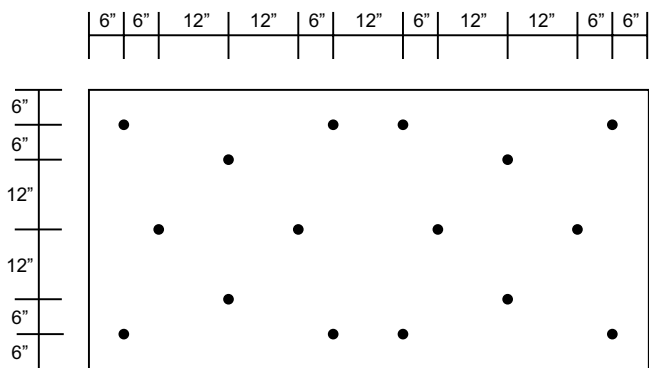
Fastening Patterns for 4' x 8' Nailbase



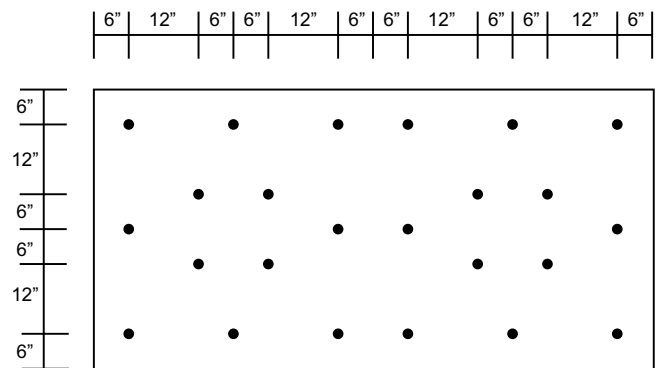
8 Fasteners/Bd.



12 Fasteners/Bd.



16 Fasteners/Bd.



24 Fasteners/Bd.



Foam-Control EPS products are manufactured by AFM Corporation licensees.

Copyright © 2010 AFM Corporation. All rights reserved. Printed in USA. Foam-Control, Perform Guard, and Control, Not Compromise are trademarks of AFM Corporation, Lakeville, MN.

CONTROL, NOT COMPROMISE.®

CONTROL YOUR:

- MATERIALS
- R-VALUES
- PROCESS
- COSTS
- TIMELINE
- LIABILITY

DON'T COMPROMISE YOUR:

- DESIGN
- ENERGY EFFICIENCY
- STRUCTURAL INTEGRITY
- PROFITABILITY
- QUALITY
- REPUTATION



Foam-Control EPS products are manufactured by AFM Corporation licensees.

Copyright © 2011 AFM Corporation. All rights reserved. Printed in USA.

Control, Not Compromise and Foam-Control EPS are registered trademarks of AFM Corporation, Lakeville, MN.

FCN-02-01/11