

TJ's Maintenance & Repair Inc.

Application

2,700 square feet of R-Control® Structural Insulated Wall panels were used to frame the TJ's Maintenance and Repair, Inc. garage and office building in Morrison, Illinois.

Project Details

Winter 2010, owner Terry Schroth had been interested in the long-term benefits of SIPs, but as fate would have it, he reaped substantial rewards on the night of January 13, 2010 when the temperature dropped to 0° Fahrenheit. The hydronic heating system had not yet been installed. Schroth was worried that his paint and drywall interior finish work would be damaged by the extreme cold. All he could do was plug in two small 1500w space heaters—one in the 50x40 shop with 12 ft ceilings and the other in a smaller office—and hope for the best.

On Monday morning Schroth visited the structure to assess the damage. To his surprise, the thermometer inside the 2000 sq ft shop area read 60°. The walls are R-Control® SIPs, and the only opening in the building was a CHI 3216 10' x 12' garage door. No damage had been done to any of the finish work or equipment. "This is amazing—if you can understand the size of this space and these were 'milk house' heaters," said Schroth.

According to Gary Sutton of Sutton Construction, "this was our first R-Control® SIP project yet we were able to erect all of the panels in 36 man-hours. My electrician was amazed at how easy it was to snake the flexible conduit through the precut electrical chases in the SIPs."

Schroth added that Gary Sutton did a lot of research on green building materials at the outset. Sutton suggested they use R-Control® SIPs because of their superior insulative qualities, as well as savings in material waste and labor costs. "I agreed with him. Nothing like a cold night in January to show me I had made a good decision," remarked Schroth.

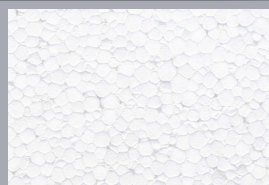
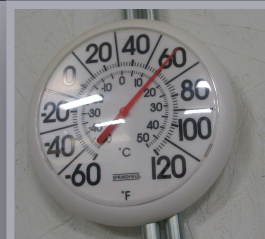
Structural Insulated Panels (SIPs)

TJ's Maintenance & Repair Inc

- Morrison, IL
- Fall 2010
- R-Control® Structural Insulated Wall Panels
- 2,700 Square Feet

Contractor

Gary Sutton
Sutton Construction



ACH
FOAM TECHNOLOGIES

WWW.ACHFOAM.COM