

# Moab Residence

## Application

8,800 cubic feet of EPS 15 Geofoam was installed as light weight foundation stabilization fill at a residence in Moab, Utah.

## Project Details

Spring 2008, EPS Geofoam was installed at a Moab residence to reduce lateral pressure on the foundation wall and reduce vertical pressure on the wall's spread footing. A spread footing was needed for the home due to poor soil conditions and settlement concerns. Geofoam's light weight and high compressive resistance made it possible for contractors to build the home on less stable soil.

EPS Geofoam also offers contractors additional benefits such as being easy to handle and install, installation is not delayed by weather and its easily modified on the jobsite which saves labor time and money.

## Geofoam

### Moab Residence

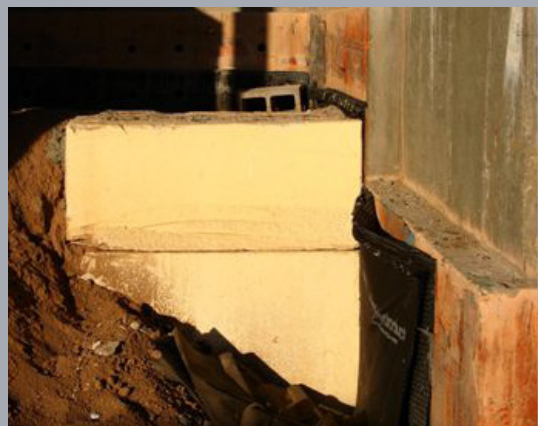
- Moab, UT
- Spring 2008
- Geofoam Foundation Stabilization Fill
- 8,800 Cubic Feet

### Contractor

Tom Reese  
Tom Reese Contracting

### Architect

Virginia Escalona  
David Schwartz Architecture



**ACH**  
FOAM TECHNOLOGIES

[WWW.ACHFOAM.COM](http://WWW.ACHFOAM.COM) ●●●